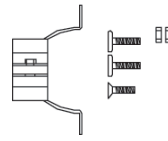
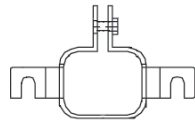


Cable Retaining Clamps

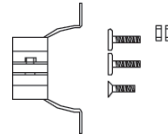
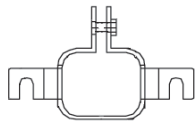
Our retaining clamps have been tooled to fit perfectly on to the IEC60320 molded plug and align with the discrete AC receptacle. The clamp will use the mounting hardware for the AC receptacle to secure the cord to the equipment.

IEC-320-C13RC *



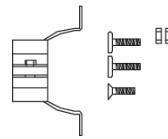
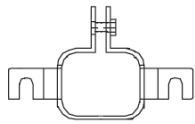
Retaining Clamp for
IEC-60320-C13

IEC-320-C14RC *



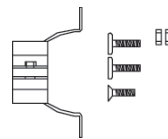
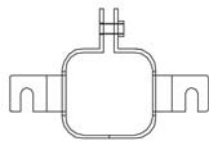
Retaining Clamp for
IEC-60320-C14

IEC-320-C19RC *

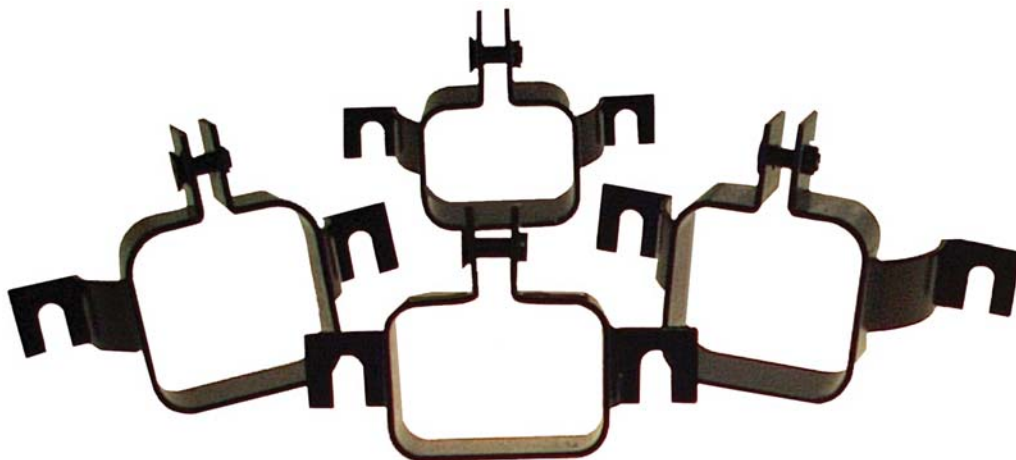


Retaining Clamp for
IEC-60320-C19

IEC-320-C20RC *



Retaining Clamp for
IEC-60320-C20

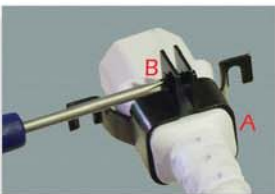
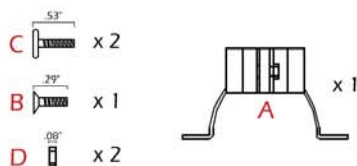


* This symbol means that these are our most commonly stocked items within a series. Look for this symbol throughout our catalog for fast shipment.



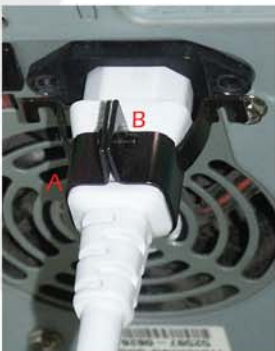


Hardware



Step 1

Place the IEC Clamp (A) onto the power supply cord and slide over the female IEC connector. Insert the small .29" screw (B) into the designated position and tighten.



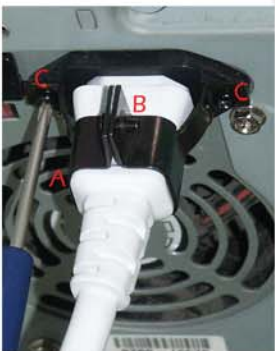
Step 2

(A) Insert the IEC connector into the desired inlet.



Step 3

Insert one of the .53" screws (C) into the right position and tighten.



Step 4

Insert one of the .53" screws (C) into the left position and tighten.



Step 5

Make sure all of the screws (B, C) are fastened, fairly tight, and now your finished!